

THIMBLE SENSORS AND BUTTON SENSORS

ambiente[®]

more than underfloor



Thimble sensors in stainless steel, brass and white plastic



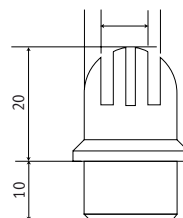
Button sensor options

PRODUCT OVERVIEW

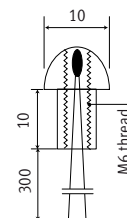
our range of button temperature sensors is designed to interface with a wide variety of HVAC control equipment. Sensors are housed in a white plastic button or thimble shaped enclosure but brass, aluminium or stainless steel versions are also available.

Each sensor is designed to be mounted on a back mounting plate or simply drill a hole suitable for the correct sized thread, pass the cable through the hole, secure with the fixing nut provided and then terminate the cable as required. We recommend that sensors are installed by a qualified technician in conjunction with any guidelines for the equipment it is being connected to. As a general rule, screened cable should be used to connect the sensor to the controller.

Dimensions (millimetres) Thimble sensor



Dimensions (millimetres) Button sensor



10004A|0415-018